



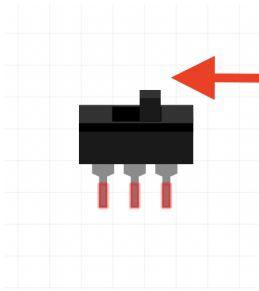
Robot Whisk User Documentation

Welcome to your Robot Whisk!

Please follow the instructions below to use your whisk seamlessly.

Turning the Robot Whisk On and Off

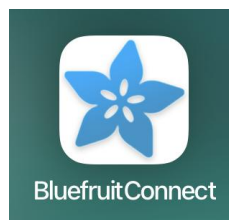
- Turn the whisk robot on by pushing the switch from right to left



- Turn it off by pushing the switch from left to right

Using your Robot Whisk

Step 1: Open your BluefruitConnect App



Step 2: Press connect for the Argon-JGDEAK device

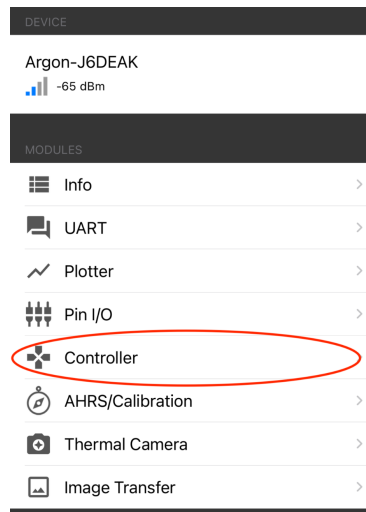


Argon-J6DEAK
Uart capable

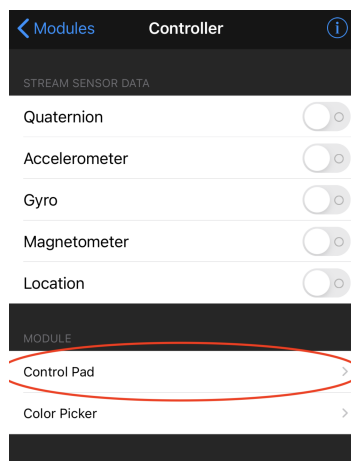
Connect



Step 3: Choose "Controller" from the list of modules



Step 4: Choose the module "Control Pad"

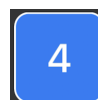


Step 5: Choose your setting according to the key below!

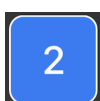
- **Please note:** settings 1 - 4 will turn on the whisk for 10 seconds when pressed



Low speed



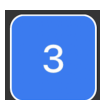
Pulse



Medium Speed



Custom Speed (see Step 6)



High Speed



Step 6: Choosing your custom speed

- If you've chosen custom speed you will be able to adjust the speed of your whisk to whatever you desire
- Turn the blue dial clockwise to go slower or counterclockwise to go faster



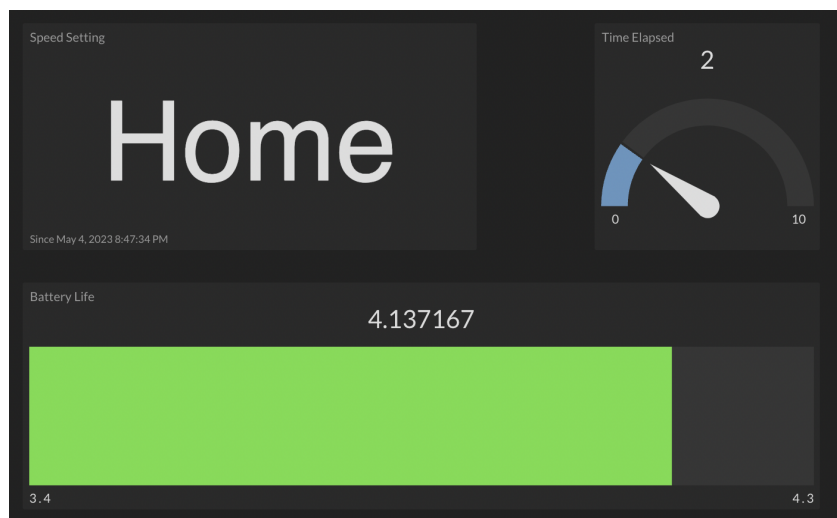
- **Please note:** the custom speed button is a press and hold. The whisk will only stay on so long as your finger is pressing down on the button.

Notes

- A song will play once the 10 seconds from settings 1 - 4 are elapsed.
- The screen will show you which setting you are currently on and how much time has elapsed
- You can switch between different settings but please note this will restart the 10 second timer if settings 1 - 4 are chosen

Dashboard Visualization

- If you wish to see the setting, time elapsed, or whisk battery life on your laptop dashboard screen please log into <https://www.initialstate.com/>.





Battery Life Guide

- Charging (Battery Life > 4.3)
- Full Charge (Battery Life ≥ 4.2)
- Nominal ($4.2 > \text{Battery Life} > 3.5$)
- Low/Needs Recharge ($3.5 > \text{Battery Life} \geq 3.4$)
- Critical (Battery Life < 3.4)

Thank you for using Robot Whisk!

Don't forget to turn off your whisk when you're done